

# DEVELOPING AN EMERGENCY DEPARTMENT INITIATED BUPRENORPHINE PROGRAM

ELIZABETH WHALEN MD, MPH

ALBANY COUNTY DEPARTMENT OF HEALTH

COMMUNITY LEVEL STRATEGIES CONFRONTING THE OPIOID EPIDEMIC

APRIL 16, 2019



## MAT IN ED

- Work of Erie County Model, Dr. Joshua Lynch
- Couple with existing referral systems in Albany County
- Discuss challenges
- Steps we have taken



## HOW DID WE START?

- Worked with NYSDOH, Catholic Charities, our Department of Mental Health on MAT in County Correctional Facilities
- Funding from NYSDOH for increased MAT
- Conversations with NYSDOH



## WORK IN ERIE COUNTY

- Dr. Josh Lynch DO, FACP Director of Emergency Medicine
- <http://Mattersnetwork.org>
- <http://Buffalomatters.org>



## MISSION

- Regional hospital systems, through the Medication Assisted Treatment and Emergency Referrals (MATTERS) network are partnering with community-based substance use treatment programs to reduce inappropriate controlled substance prescribing, increase access to medication assisted treatment (MAT), and provide rapid access to substance use treatment programs

• <https://mattersnetwork.org/>



## VISION

- To aid our shared patients in initiating and continuing successful opioid and overall substance use disorder treatment.
- To reduce morbidity and mortality associated with opiate and substance use disorder.
- To provide a best practice model for Hospital and Emergency Department Initiated Buprenorphine Programs that others can emulate.
- To provide the same high level of care to patients suffering from opiate use disorder that we would for any other emergency medical condition.

<https://mattersnetwork.org/>



## VALUES

- We will prescribe buprenorphine for patients when appropriate based on our guidelines.
- We will not automatically disqualify patients from receiving buprenorphine if they engage in polysubstance abuse (especially benzodiazepines and/or alcohol).
- We will refer patients to the most appropriate follow up possible based on their unique needs.
- We will inform patients of the referral program's expectations.
- We will continuously evaluate our program and share our lessons learned with others.

<https://mattersnetwork.org>



## VALUES (CONTINUED)

- Community-based substance abuse treatment programs that embody these values:
- They will accept and work with patients regardless of insurance status.
- They will accept patients who have not been prescribed buprenorphine or MAT in the past.
- They will offer timely appointments to patients referred from the hospital and emergency department.
- They will accept referred patients even if previously discharged from a treatment program.

<https://mattersnetwork.org/>



## VALUES (CONTINUED)

- They will not automatically disqualify patients from receiving medication assisted treatment if they engage in polysubstance abuse (especially benzodiazepines and/or alcohol).
- They will not place undue financial burden on the patient.
- They will provide care that is culturally appropriate for the target population of patients with substance use disorder.
- They will provide feedback referring providers regarding the disposition of referred patients to improve processes.

<https://mattersnetwork.org/>



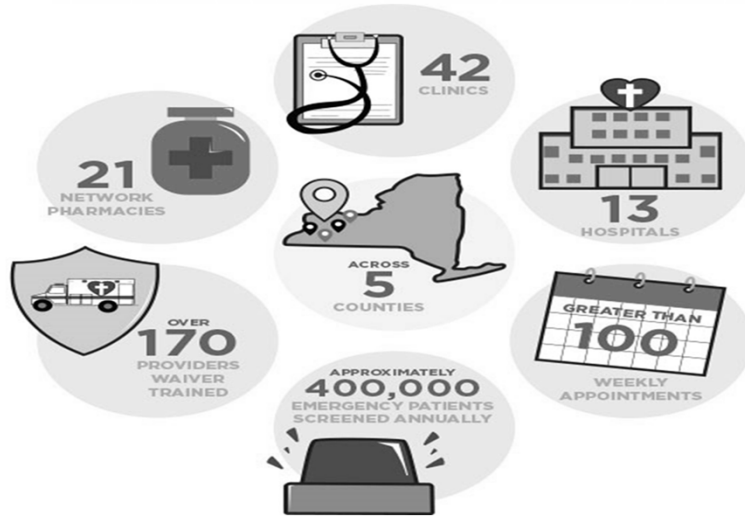
## TOOLS

[HTTPS://MATTERSNETWORK.ORG/#RESOURCES](https://mattersnetwork.org/#resources)

- Prescribing Guidelines, Best Practice
- Patient Handouts
- Referral Packet
- Buprenorphine Discharge Instructions
- Waiver Instructions
- FAQ



[HTTPS://BUFFALOMATTERS.ORG/](https://buffalomatters.org/)



## STRENGTHS

- ED Doc Lead
- Robust Partnerships
- Value Proposition/ Evidence Base



## ALBANY COUNTY

- Two hospital Systems: Albany Medical Center, St. Peter's Health Partners (St. Peter's and Albany Memorial)
- Our Plan- to meet with hospital systems, replicate program
- Message: Value Proposition, Evidence Base, Decreased Recidivism, Morbidity and Mortality, increase effective referrals to treatment



## ALBANY COUNTY

- Partners: Catholic Charities, Department of Mental Health
- Resources: Referral Network- Capital Region Open Access Engagement Program



## CAPITAL REGION OPEN ACCESS ENGAGEMENT PROGRAM

- Addictions Care Center Albany, Project Safe Point, Albany County Executive, Department of Mental Health
- Information and Support, Care and Safety, Services and Connections
- 24/7 365 days a year hotline with referral
- OASAS funded



## TO DATE

- February: Met with ED Providers at AMC
- April: Scheduled Meeting with St. Peter's Health Partners
- Initial Success: Albany Med ED Physicians to have waiver training with Dr. Josh Lynch later this month
- Program well received, still work to do





## CHALLENGES

- Perception of Increased Patient Load
- Mission
- Shift in Practice



## LEGISLATIVE AGENDA

- NYSCLMHD Executive Budget Proposal (January 2019):

“The Executive proposal includes provisions to increase access to behavioral health services (Behavioral Health Parity Reforms) ... Additionally, the proposal requires hospital emergency departments to have policies and procedures in place for providing medication assisted treatment prior to patient discharge. The Executive Budget proposal also requires EDs to establish protocols around SUD screening, education, and treatment if appropriate...”



## LEGISLATIVE AGENDA

NYS CLMHD's summary of Enacted Budget:

“Expanding Access to Buprenorphine in Hospitals :The Enacted Budget includes provisions to require all hospitals statewide to develop protocols for their emergency departments to address opioid use disorder based on the standard of care for treatment or referral for treatment.”



## ALBANY COUNTY MATTERS/CAPITAL REGION MATTERS

- Goal to replicate program
- First Steps are promising
- Stay Tuned.....



THANK YOU

- [Elizabeth.Whalen@albanycounty.ny.gov](mailto:Elizabeth.Whalen@albanycounty.ny.gov)

