

# Climate & Health Adaptation Workshops

**Complete Streets, Climate Smart Communities, & Environmental Improvements**  
*November 2<sup>nd</sup>, 2022*

# IMPORTANT INFORMATION!

- For those who have joined via phone before logging in on your computer...
  - To sync your online and phone presence, click on the audio icon (should look like a headset)
  - Select “switch to phone audio” or “phone call” and follow the directions that come up on your screen
  - When your phone and online presence are synced, the audio icon should look like a phone

# Thank You!

To the grants that supported these workshops...



CDC-RFA-EH16-1602  
CDC-RFA-EH21-2101

CDC-RFA-EH17-1702  
CDC-RFA-EH22-2202

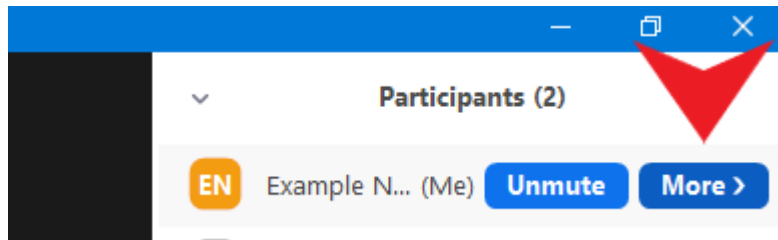


...and to the planning team that brought these workshops to life!

- ❖ Neil Muscatiello
- ❖ Faith Schottenfeld
- ❖ Kristen Vacca
- ❖ Laura Agnew
- ❖ Sarah Ravenhall
- ❖ Cristina Dyer-Drobnack

# Before We Begin...

- **This session is being recorded** and will be emailed out to all registrants, and be uploaded onto NYSACHO's webpage
- Please remain **muted** to limit background noise
- At any time during the session, share your thoughts, feedback, and questions using the chat box, or Zoom's "reactions"!
- Please **rename yourself** to include your name and county/affiliation



In the "Participants" list, hover over your name and click "Rename"

# Today's Agenda

9:05 – 10:00 AM

Content Overview

10:00 – 10:15 AM

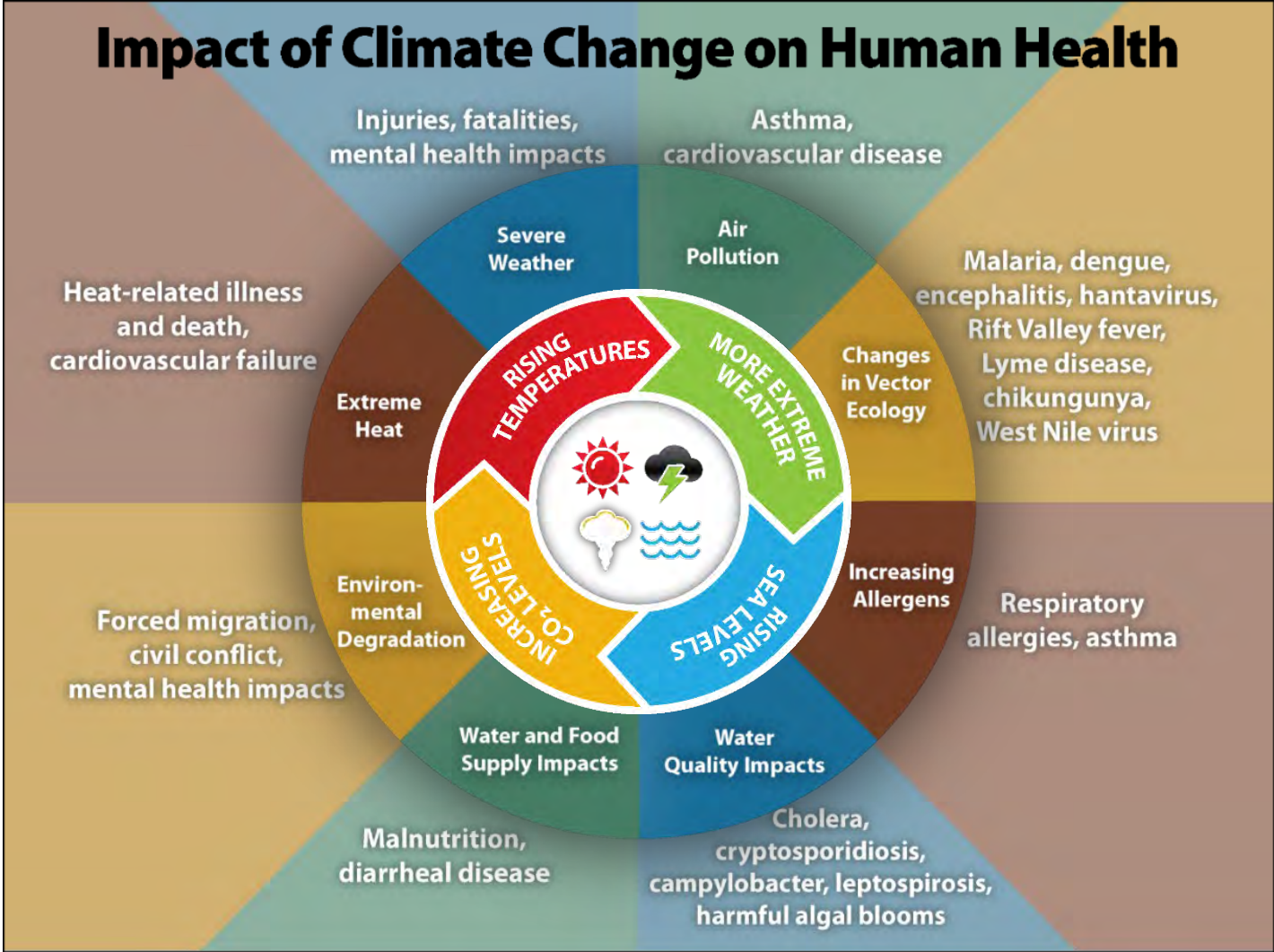
Break

10:15 – 11:25 AM

Breakout Sessions

11:25 AM – 12:00 PM

Report Out



Source: Centers for Disease Control and Prevention, Climate and Health Program

# Climate Smart Communities

## Grant Awards with Climate and Health Links

- Complete Streets, including funding for multiple phases
- Development of bike paths and sidewalks
- Installation of air conditioners in buildings to serve as cooling centers
- Development of shade structures
- Development of extreme heat emergency plan
- Development of audible flood warning systems
- Developing resilient drinking water infrastructure
- Food recovery infrastructure program
- Vulnerability Assessments
- Relocation of important buildings (town halls, fire departments, emergency services facilities) out of flood zones
- Drainage projects that reduce flooding
- Stormwater infrastructure projects

More information available at:

[https://www.dec.ny.gov/energy/109181.html#:~:text=The%20Climate%20Smart%20Communities%20\(CSC,and%20planning%20and%20assessment%20projects](https://www.dec.ny.gov/energy/109181.html#:~:text=The%20Climate%20Smart%20Communities%20(CSC,and%20planning%20and%20assessment%20projects)

# Climate and Health

## Complete Streets/Smart Growth

Paul Beyer—Director of Smart Growth

NYS Department of State

Office of Planning, Development and Community Infrastructure



# The Land Use/Transportation Infrastructure Connection

## A 'CHICKEN-AND-EGG' DEBATE

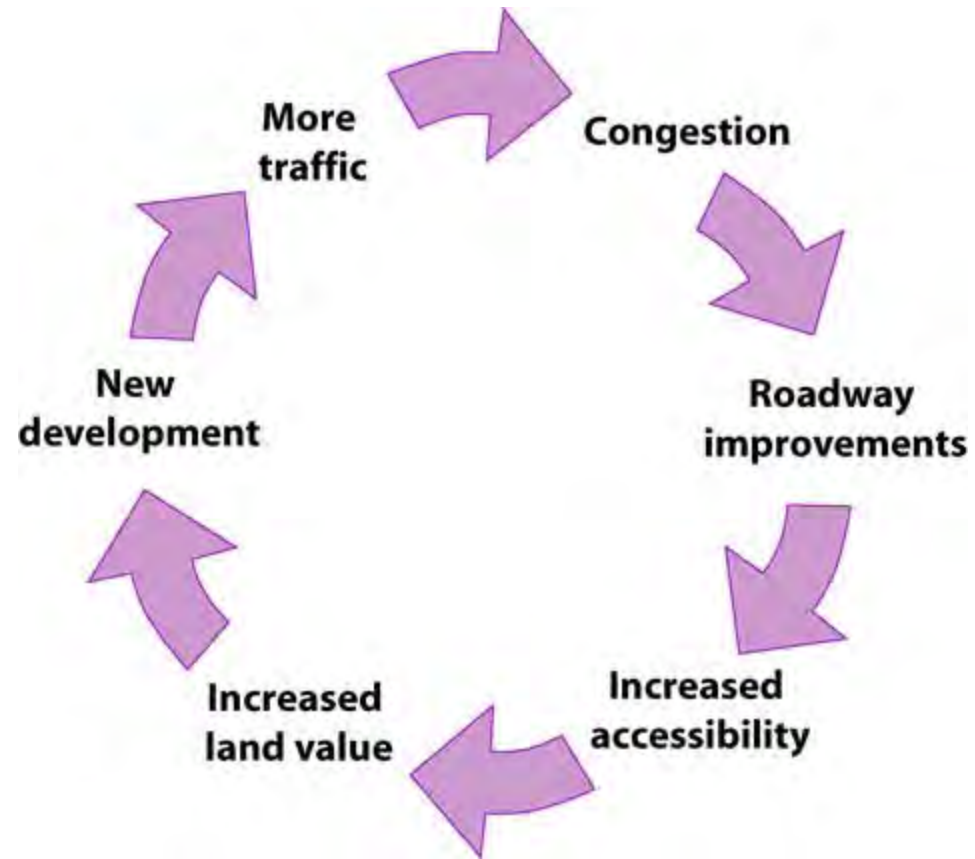
On the relationship between land use and transportation, the late Senator Moynihan said:

- “Highways determine land use, which is another way of saying they settle the future of the areas in which they are built.”

The American Planning Association went a step further:

- “No single force has had a greater impact on the pattern of land development in American cities in this century [Twentieth] than highways.”

# The Land Use-Transportation Cycle



(Source: Syracuse Metropolitan Transportation Council Long Range Plan 2011)

## One Mobility Option -- Cars





# Several Mobility Options -- Car, Bike, Pedestrian, Transit

## A “Complete” Street



(Source: Project for Public Spaces -- Vision for a road remake in Orange Beach, Alabama)



(Source: Bergmann Associates)

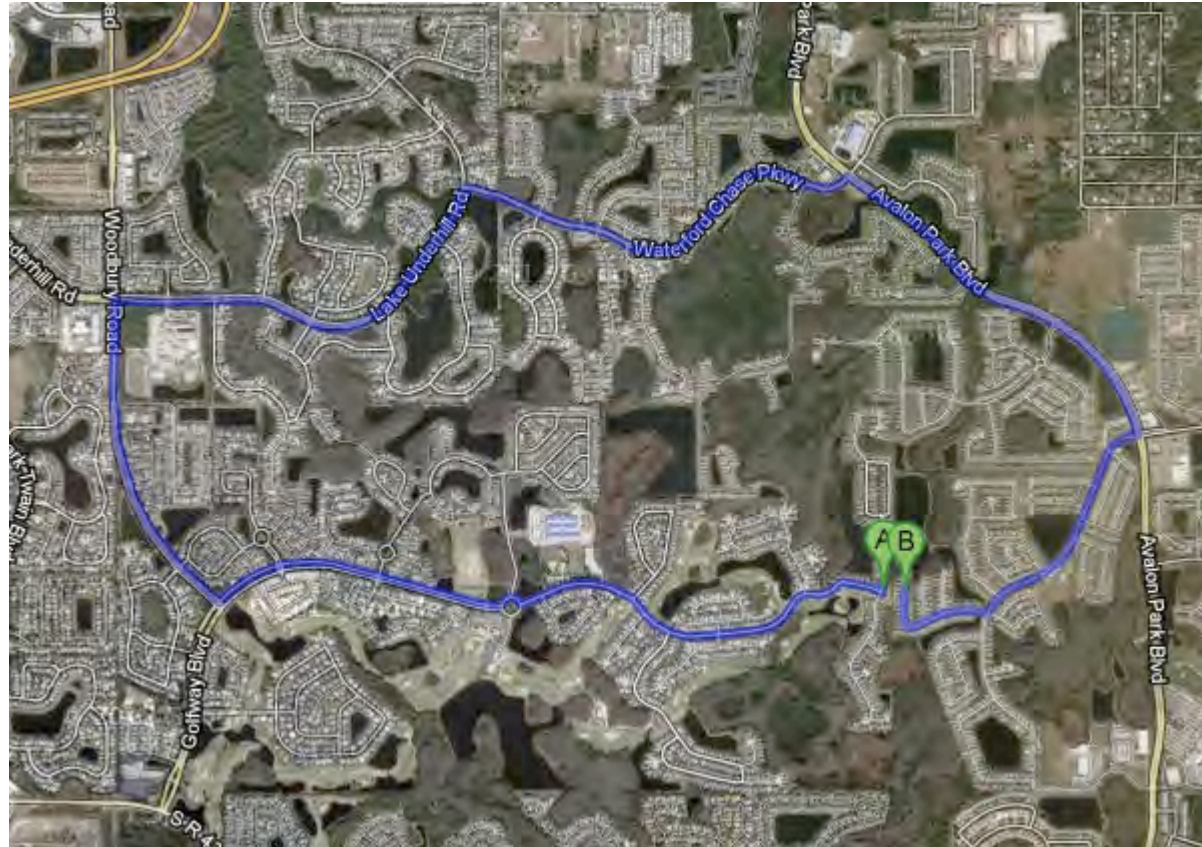
## Complete Streets/Green Infrastructure



(Source: NYS DEC)



## Orlando, FL



Source: Google Maps; provided by StreetsBlog Network

# IT ALL STARTS WITH GOOD PLANNING AND ZONING

- NYS DOS Smart Growth Planning and Zoning Grant Program
- NYS DEC Climate Smart Communities Program



# Planning Principles of Smart Growth

- Compact Development
- Mix of Land Uses
- Concentrated Development (infill/re- development) in “Municipal Centers”
- Walkable/Bikeable/Transit-Accessible Design – “Complete Streets”
- Variety of Housing Options – different ages, incomes, household composition
- Safe, Accessible Public Spaces
- Street Connectivity
- Strategically-Preserved Open Space/Agricultural Land/Natural Habitats

## SMART GROWTH CRITERIA

### TEN CRITERIA -- TWO BROAD CATEGORIES

- **“WHERE”** – LOCATION
- **“HOW”** – DESIGN; PROCESS; ENVIRONMENTAL FACTORS; SUSTAINABILITY

#### ***NJ Future*** Smart Growth Scorecard:

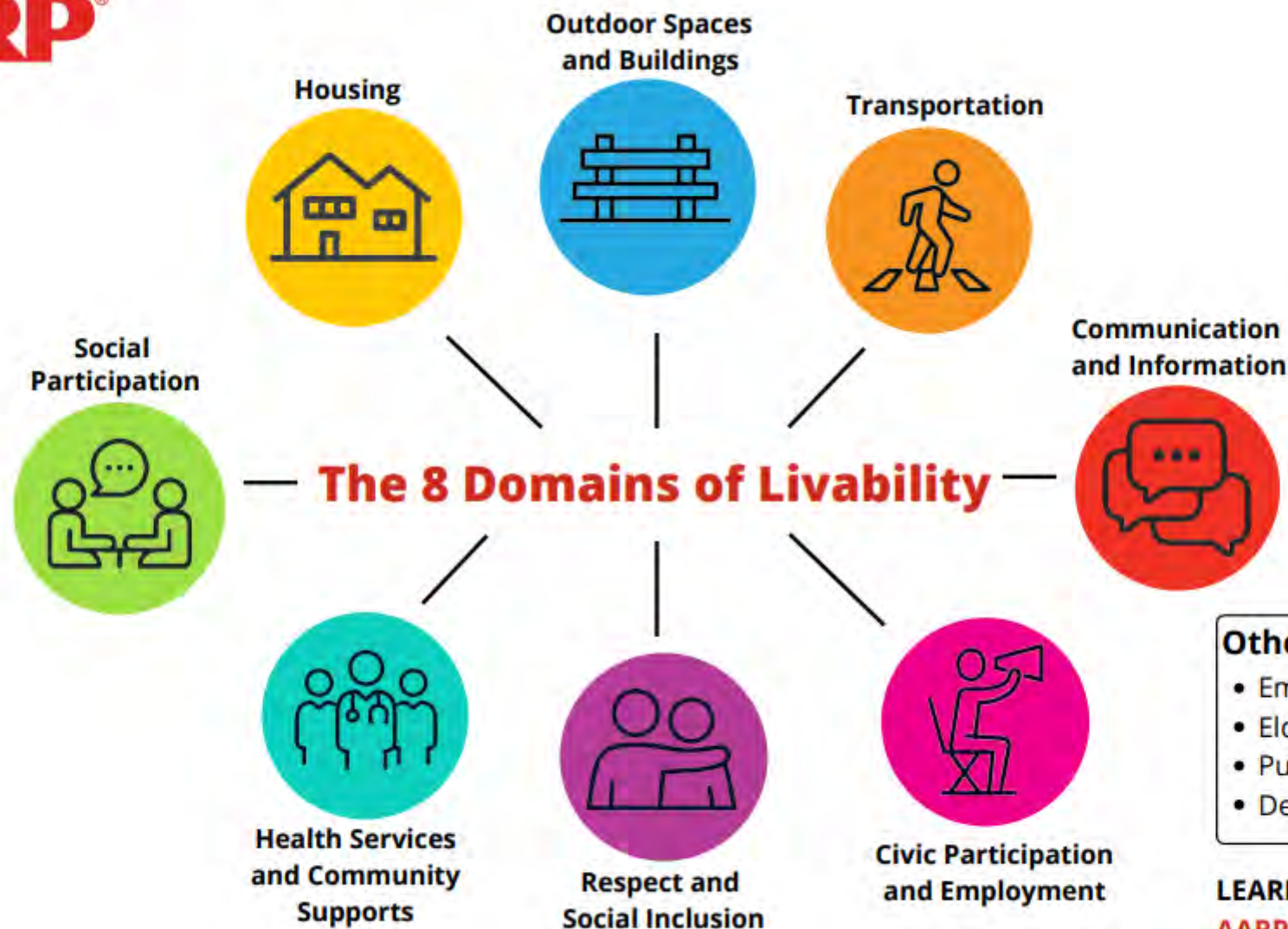
“How do you know Smart Growth when you see it? Smart Growth has two primary features: the “where” and the “how.” It happens “where” development can be accommodated with minimal adverse impact to the environment, and in places where development takes maximum advantage of public investments already made. Smart Growth also addresses “how” the finished development will work with neighboring development to restore choices that are missing in places marked by sprawl: such as the choice to walk or use public transit, the choice to meet neighbors in attractive common spaces, or the choice to live in an apartment, a house, or a condominium.”

SMART GROWTH/COMPLETE STREETS

AND

AGE-FRIENDLY NY/HEALTH ACROSS ALL POLICIES

THE PERFECT MARRIAGE



#### Other Areas

- Emergency Preparedness
- Elder abuse
- Public safety
- Dementia-friendly

**LEARN MORE**

[AARP.org/Livable](https://www.aarp.org/Livable)

# POLICY/PROGRAMMATIC OPPORTUNITIES

- Complete Streets Act
- NYS DOT Complete Streets Checklist
- Federal/State Highway Safety Improvement Program/Transportation Alternatives Program
- Smart Growth Infrastructure Act
- Downtown Revitalization Initiative/NY Forward

# Climate Leadership and Community Protection Act

- Land Use
- Transportation
- Transit-Oriented Development
- Public Health
- Urban Heat Island

INVESTING IN OUR COMMUNITIES

**35% with a goal of 40%**

OF BENEFITS WILL BE DEDICATED TO  
DISADVANTAGED COMMUNITIES

NYSACHO Fall 2022 Virtual Climate & Health Adaptation Workshops

## Essex County Health Department

11/2/2022

### Overview of Initiatives:

*Sunscreen Dispensers*

*Cooling Centers*

*Complete Streets*



**HEALTH  
DEPARTMENT**  
Public Health Unit





Essex County, NY Public Health

July 23, 2021 · 🌐

Thank you all for participating in the Skin Cancer Awareness Campaign Survey!

- 🟡 About 45 people participated in our survey.
- 🟡 88% were in favor of adding the sunscreen dispensers throughout our community.
- 🟡 Most people would like to see the dispensers at local parks, beaches and sports fields.

Please look for sunscreen dispensers at these popular Essex County locations!

- Bulwagga Bay Public Beach, Port Henry
- Mirror Lake Public Beach, Lake Placid
- Black Point Public Beach, Ticonderoga

Thanks to all that participated! Your feedback helped guide our campaign efforts.



# SUNSCREEN DISPENSERS

Chronic Disease Program

Skin Cancer Prevention Campaign



## Community Engagement-Public

\*Q: What prevents you from wearing sunscreen?

\*A: I forget it

\*Q: Do you think having dispensers at popular recreation areas will encourage people to use it?

\*A: YES

\*Q: Where would sunscreen dispenses be beneficial?

\*A: Beaches & Parks



## Implementation

Beaches

- 3 most populated communities with beaches
  - Ticonderoga
  - Moriah
  - Lake Placid



# COOLING CENTERS

Emergency Preparedness & Response Initiative



## Community Engagement-Libraries

\*Q: Does your library have air conditioning?

\*A: 13 libraries responded - YES

\*Q: Are you willing to be identified as a local Cooling Center?

\*A: YES



## Implementation

Comprehensive List Created/Maintained

Promoted through DOH

Promoted through CEF Libraries



# COMPLETE STREETS

Chronic Disease Prevention Initiative





**Co-Chairs:**

Essex County Public Health  
North Country Healthy Heart Network

**County & State Departments:**

Essex County Planning/Community Resources  
Essex County Department of Public Works  
Essex County Department of Transportation  
Essex County Highway Association  
Essex County Industrial Development Agency  
New York State Department of Health  
New York State Department of Transportation

**Planning Firms:**

PlaceSense  
Chazen

**Trail Groups:**

Bark Eater Trail Alliance (BETA)  
Champlain Area Trails (CATS)  
Elizabethtown Parks & Trails Committee

**Community Groups:**

Mercy Care for the Adirondacks-Aging in Place Task Force  
PRIDE of Ticonderoga

**County Boards:**

Essex County Board of Supervisors  
Essex County DPW Committee

**Town Specific Groups:****(Town, Planning, & Zoning Boards):**

Crown Point (Supervisor & School)  
Elizabethtown (Town & Planning)  
Jay (Supervisor & School)  
Lake Placid/North Elba (Mobility Committee)  
Lewis (Town & Hwy Super)  
Newcomb (Planning, Town)  
Westport (Planning, Town & Hwy Super)  
Willsboro (Codes, Planning, Town & Hwy Super)  
Wilmington (Zoning, Town, Hwy Super & Recreation Committee)

# Education & Encouragement



## Education & Encouragement

2009	2010	2011	2012	2013	2014
Sept. 2009 - Building Healthy Communities: An Introductory Course	<p>Feb. 2010 - Healthy Communities Capacity Building Initiative</p> <p>March 2010 - Building a Healthier Essex County Workshop</p> <p>June 2010 - Planning Safer Communities for Bicyclists &amp; Pedestrians</p> <p>June 2010 - Advocacy and Local Government Training</p>	<p>May 2011 - Put the Pieces Together: Community Strategies to Reduce Obesity</p>	<p>March 2012 - Designing Pedestrian Facilities for Accessibility</p> <p>Sept. 2012 - Walk/Bike NY: Encouraging Sustainable Movement</p>	<p>2013- Elizabethtown &amp; Lewis: Comprehensive planning sessions discuss importance of walkable community</p> <p>2013-Westport, Wilmington, Willsboro: provided visualizes and discussed the walking impact on the community</p>	<p>May 2014 - Walk/Bike NY Conference</p>

# Projects



2011

Essex County: Shared Roadway signs on county roads (12)

2012

Elizabethtown: Bike/ped signs and crosswalk painting

Westport: Crosswalk request submitted to NYS DOT; pedestrian enhancements.

Ticonderoga: Trail marker signs, stencils and bike racks for LaChute River Trail

2013

Lewis: crosswalk on county rd.

Westport: crosswalks approved by NYS DOT. Plan for Spring 2014 for implementation (2)

Wilmington: mobile speed flasher, new sidewalk section, extended sidewalk, submitted to NYS DOT plan for a 4 way consolidation to become more friendly

Willsboro: Shared road way signs implemented

Crown Point: Speed reduction within Hamlet.

2014

Minerva: Speed flasher implemented

Westport: Speed flashers requested to be installed to NYS DOT. Approved waiting on signs.

## Land Use Planning

2010

Jay, Keene, Wilmington, Lake Placid: **High Peaks Waterfront Revitalization Strategy**



2011

Ticonderoga: **LaChute River Trail** Improvements

2012

Elizabethtown: **Active Living Strategy**

Lake Placid: **Mobility Comm. recommendations to Planning Board**

Crown Point & Jay: **Safe Routes to School Application**

2013

Newcomb: **Smart Growth Plan** with bike/pedestrian recommendations

Lake Placid: **Adopts Mobility Committee Recommendations**



2014

Lewis: Included **Main Street plan** within their **Comp Plan**

Elizabethtown: Included **Active Living Strategy**, complete streets in **Comp Plan**



# Advocacy



2011	2012	2013	2014
Crown Point: Letter of support/advocacy for NYS DOT Champlain Bridge project to maintain pedestrian accommodations.	Lake Placid/Saranac Lake: Letter of support/advocacy for Bike 86; NYS DOT repaving project—advocating for the re-striping of lanes allowing for wider shoulders for cycling.	County wide: Get Out & Live North Country campaign – three counties advocating for people to utilize infrastructures to support healthy lifestyles, continuous development, and upkeep to these spaces.	Newcomb: Letter of support/advocacy for Route 28N; NYS DOT repaving project – advocating for wider shoulders for cycling and pedestrian, reduced speed limit by their school; cross walks connecting public spaces, snowmobile crossing, sidewalk development, and recreational way finding signs.
County wide: Applying to NYS DOT for changes and implementations on state roads going through local communities.			

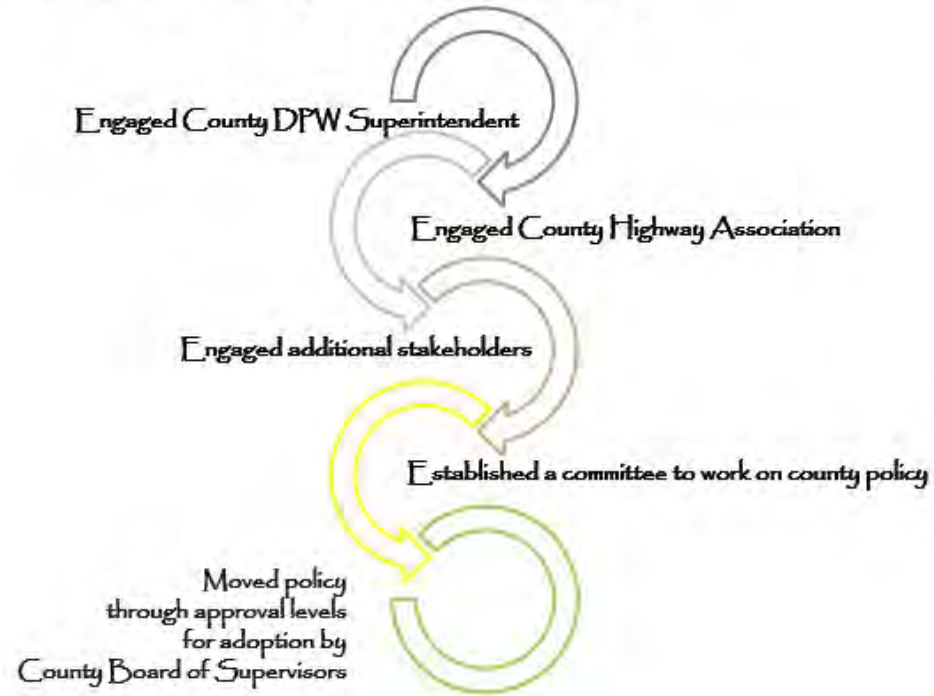


# Policy Adoption



2010	2011	2012	2013	2014
Elizabethtown	Lewis	Essex County Newcomb Westport Wilmington	Willsboro	Essex Minerva

# County Policy Adoption



County/Town	Policy/Resolution	County/Town	Policy/Resolution
Essex County	X	Minerva	X
Elizabethtown	X	Newcomb	X
Lewis	X	North Elba	
Moriah	X	North Hudson	X
Ticonderoga	5.12.16	Schroon	X
Chesterfield	X	St. Armand	
Crown Point		Westport	X
Essex	X	Willsboro	X
Jay		Wilmington	X
Keene		Village of Saranac Lake	X
		Village of Lake Placid	X



# Lessons Learned ---

## Pictures

are worth 1,000 words



## Make Friends

Relationships are at the heart  
of community mobilization



# Lessons Learned ---

## Listen

to WHAT is important to WHO



## People

within the community must have investment & ownership



# Lessons Learned---

**Think Big  
Start Small**



**Be Patient**







# THANK YOU

Jessica Darney Buehler, MPH

Director of Health Planning & Promotion

*(Previously Emergency Prep & Response  
Coordinator; Previously Health Educator)*

# Tompkins County NYSACHO Presentation

November 2022



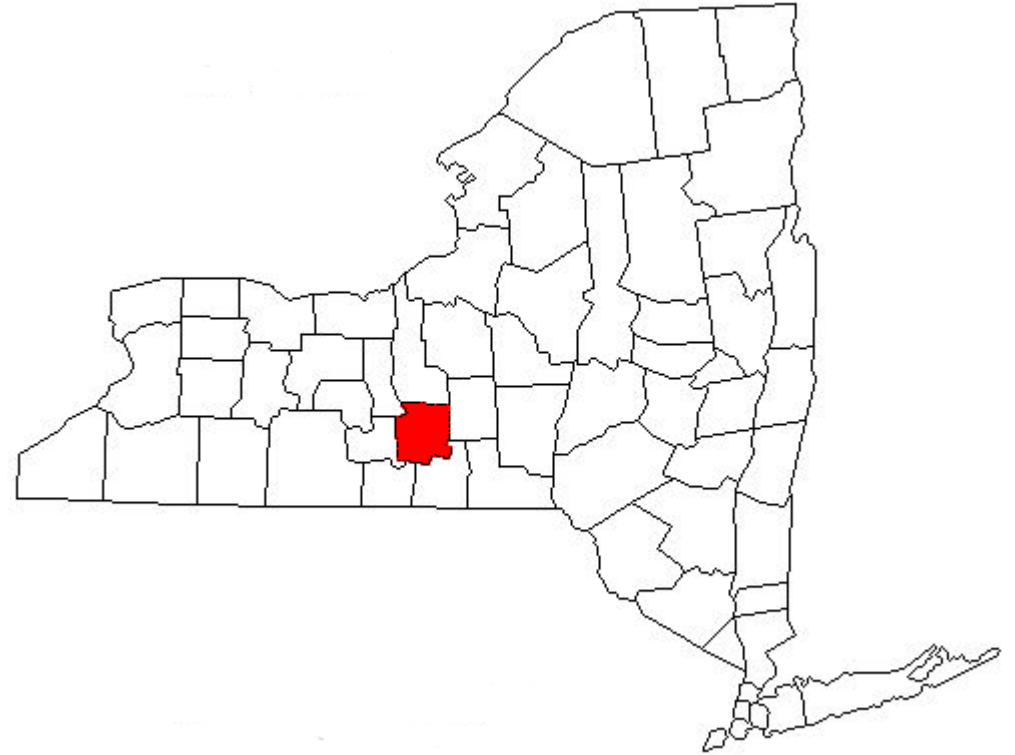
11/2/2022





# Tompkins County

- County Seat: Ithaca, NY
- Population: 105,000
- Home of Cornell, Ithaca College, TC3
- Strong history of environmental action:
  - Ban on Fracking
  - Solar Tompkins
  - HeatSmart Tompkins
  - Tompkins County Energy Roadmap



# Climate Smart Communities

- Certified Silver
  - September 28<sup>th</sup>, 2018
  - 369 points – most of any County
- Planning for recertification in 2023
  - Internal team gathering documentation and preparing submission



# Tompkins County Environmental Efforts



**GREEN  
FLEET**



**GREEN  
FACILITIES**



**RENEWABLE  
ELECTRICITY**



**ADAPTATION  
& RESILIENCY**







# GREEN FLEET



---

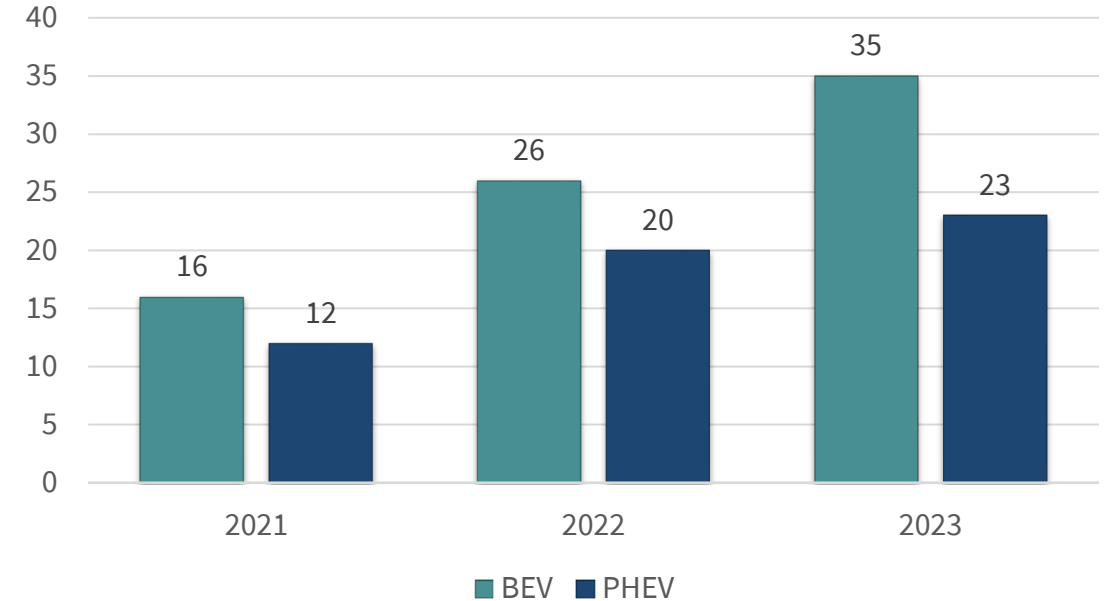
11/2/2022

# Green Fleet

## Facilities Vehicle



## Fleet Electrification 2021-2023



# Tompkins County Electric Vehicles

## ITS LEAF



## Facilities Ford E-Transit





# Tompkins County Electric Vehicles

## Facilities Chevy Volt



## Office for the Aging Mach-E



# Tompkins County Electric Vehicles

## Sheriff Ford Mustang Mach-E



## Public Health RAV4 Prime







# GREEN FACILITIES



---

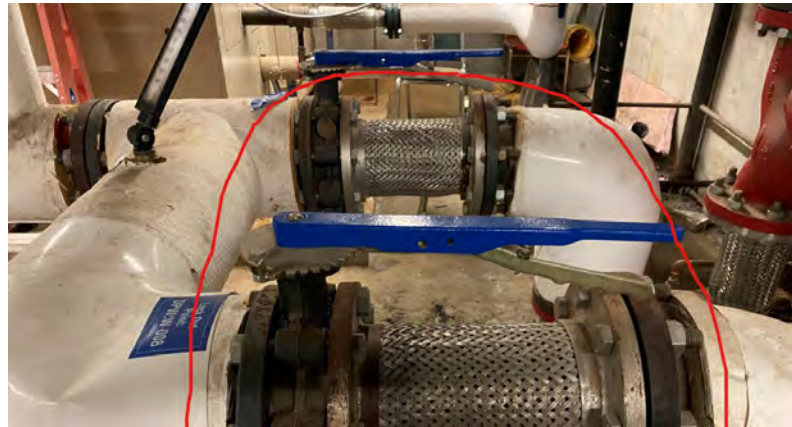
11/2/2022

# Green Facilities

- 3-Phase Green Facilities Project
  - Goal: Reduce GHG emissions from County buildings
- Phase One – Launched October 2022
  - Cost: \$14.4 Million\*
  - GHG Reduction: 524.4 MT of CO2
  - Payback: 23 years\*

Carbon & Energy Reduction Measure	Start	Finish	Carbon Impact 524.4 MT total
LED Lighting Upgrade	October '22	April '23	55.4
Building Envelope	October '22	December '22	51.7
Water Conservation	November '22	December '22	6.2
Pipe and Valve Insulation	October '22	December '22	43.1
TEGG (Electrical Panel Inspection)	January '23	February '23	5.8
Transformer Replacement	April '23	May '23	13.7
VRF Installation	March '23	September '23	63.3
Controls Upgrade and Optimization	October '22	December '23	78.9
Geothermal Installation	March '23	December '23	115.1
RTU Replacement	May '23	August '23	91.1
Window Replacement	Moved to Later Phase		2.8
Roof Replacement	Moved to Later Phase		3.1
Included in Phase I preliminary assessment			
Pulled ahead from Phase II for CRITICAL NEED, COST & CARBON IMPACT VALUE			
Moved to later phase to increase carbon reduction impact of Phase I			

# Highlights of Phase 1 Actions







# RENEWABLE ELECTRICITY



---

11/2/2022

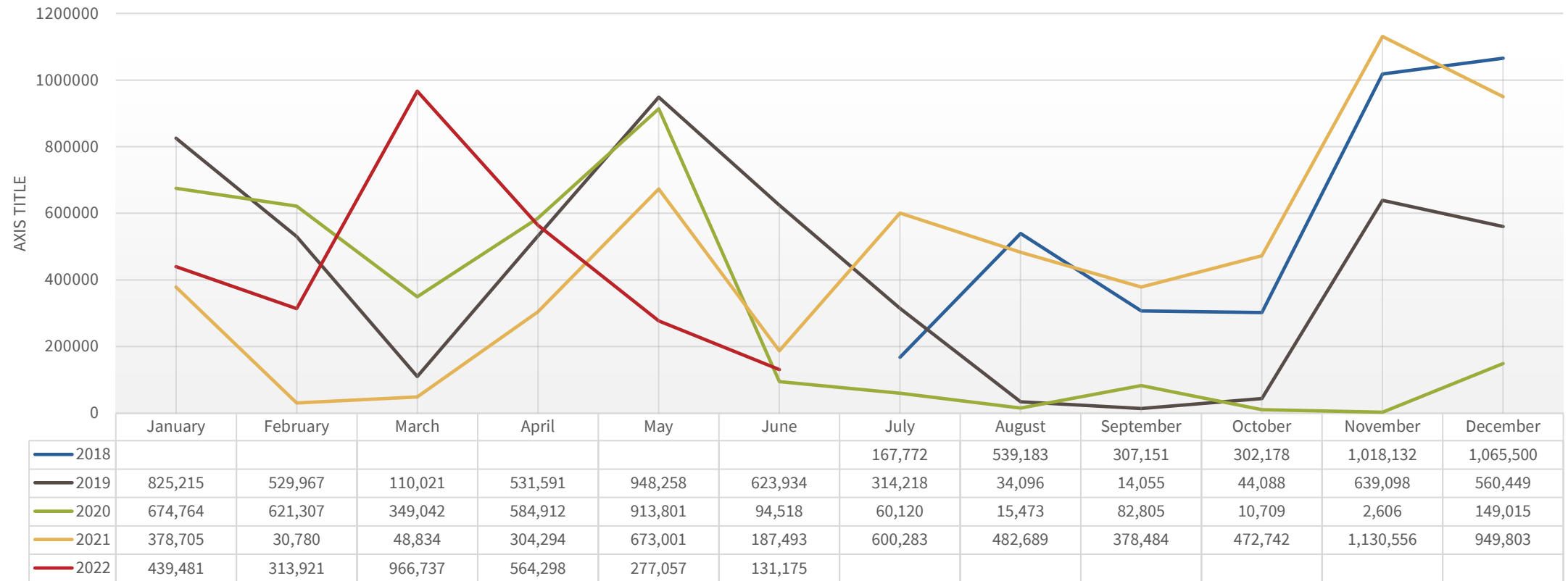
# Waterloo Hydro Agreement

- Partnership starting in 2014
  - 20-Year Power Purchase Agreement (PPA)
  - County receives electricity and renewable energy certificates
- Supplies 33-50% of County electricity usage





# Variable Electricity Production



# Closed Landfill Solar Array

- Landfill closed for 25+ years
- 83 buildable acres 10-13 MW
- Nearby electric infrastructure
- Part of NYSERDA's Build-Ready Program
  - Transforms difficult sites into renewable energy assets





# ADAPTATION & RESILIENCY



---

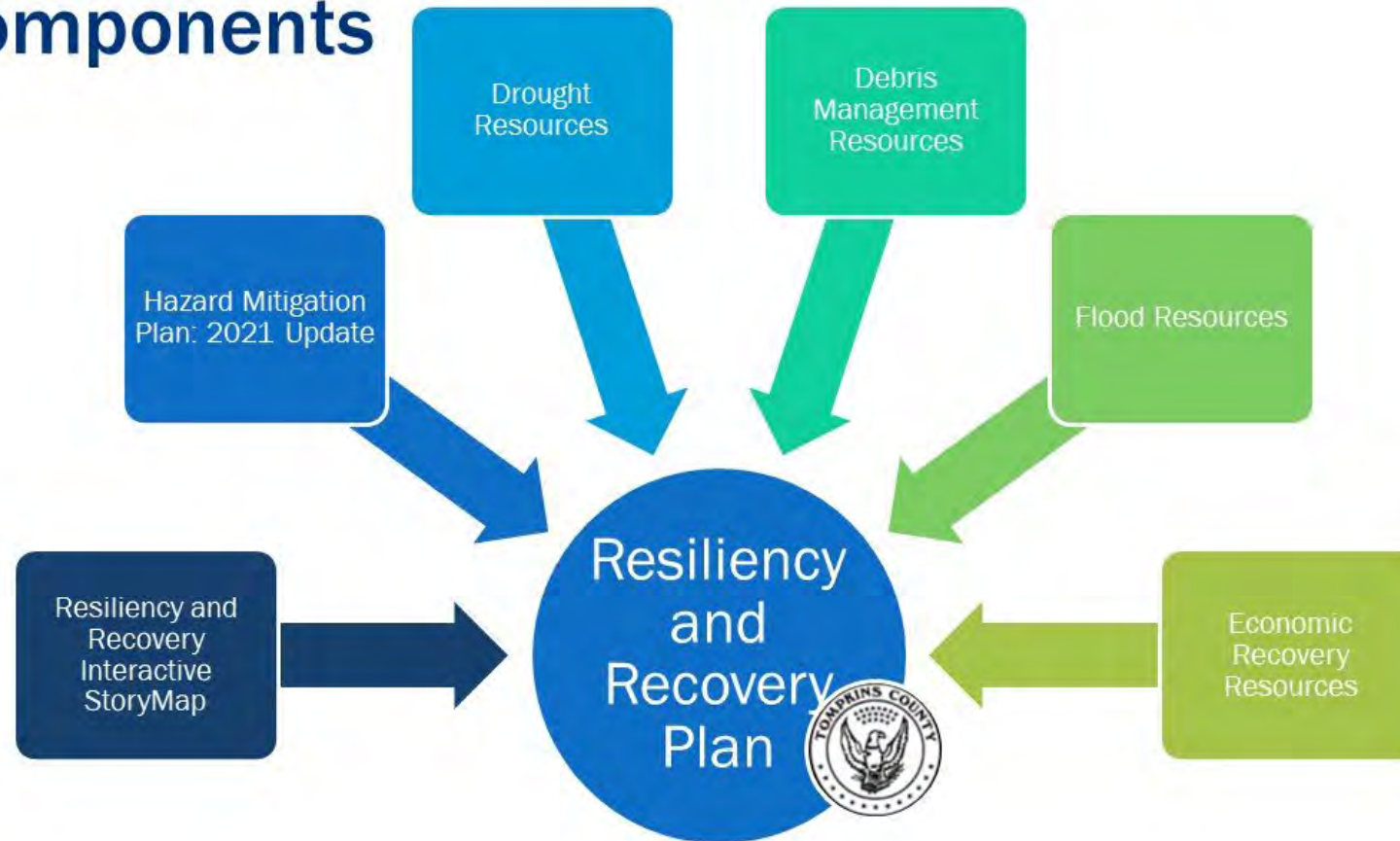
11/2/2022

# Natural Infrastructure Capital Program



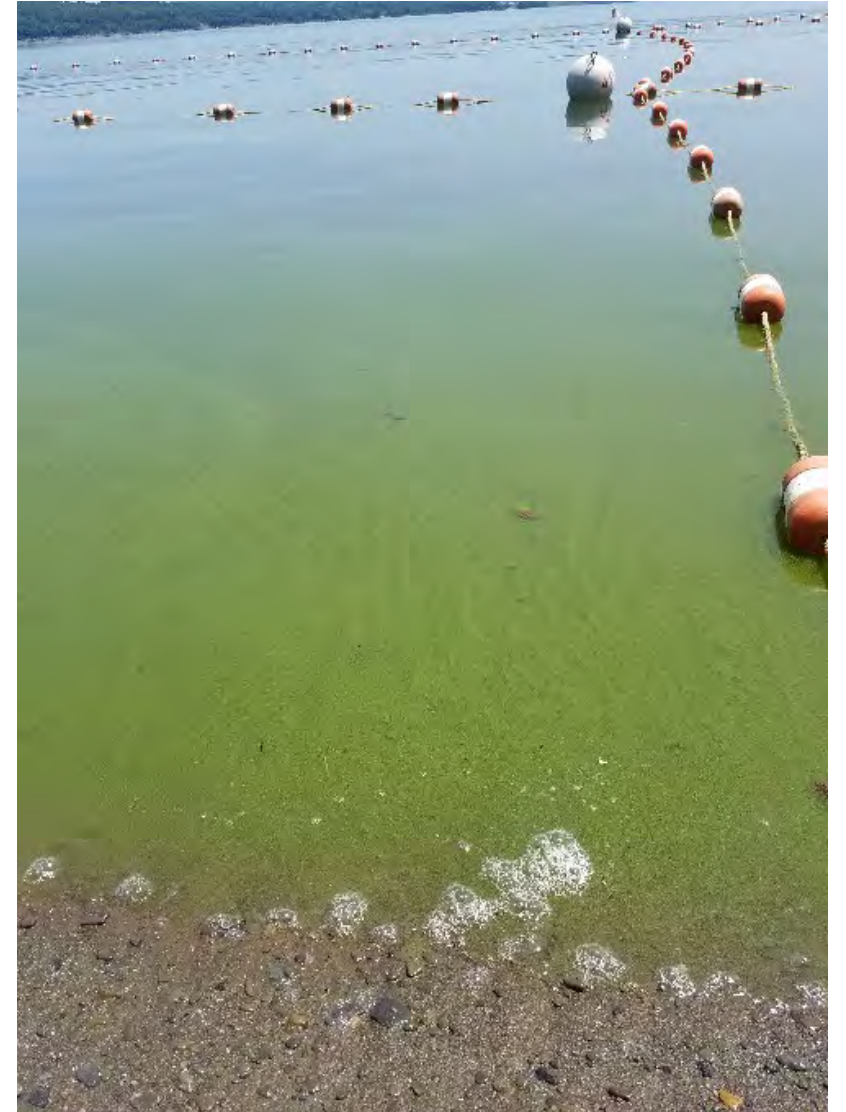


# Resiliency and Recovery Plan (RRP) Components



# Harmful Algal Bloom Strategy

- Developed and approved by the Tompkins County Water Resources Council in 2021
- Priority areas include:
  - Agriculture
  - Ditch Management
  - Stream Buffers
  - Wetlands
  - Collaboration
- Support for Community Science Institutes  
HABs Harrier Program





# Stream Corridor Protection Program

- Tompkins County annually funds \$25,000 for:
  - Stream Corridor Revegetation
  - Stream Bank Stabilization
  - Stream Corridor Feasibility Studies



# Public Outreach

- Help residents understand the benefits of electrification:
  - Reduction of energy usage and GHG emissions
  - Public Health Benefits
    - Taking combustion out of buildings – improving indoor air quality
    - Reducing PM 2.5 and other particulates from vehicle travel – improving outdoor air quality
- Leadership through example
  - Trying innovative solutions
  - Developing case studies





**Department  
of Health**



# Questions?

Use the chat box or use the “raise your hand” feature to ask your question(s)!



**Department  
of Health**



**Break 😊**  
**Return at 10:20 AM**

# Breakout Rooms

## Rooms for Counties

1. Clinton
2. Erie
3. Saratoga
4. Seneca
5. St. Lawrence, Jefferson, Lewis, Franklin, Essex
6. Rockland, Ulster, Putnam, Dutchess
7. Chautauqua, Allegany, Cattaraugus
8. Broome, Chenango, Tompkins, Steuben, Schuyler
9. Cortland, Oswego, Oneida, Fulton
10. Schoharie, Rensselaer, Schenectady, Washington
11. Genesee, Monroe, Wyoming, Orleans, Wayne, Ontario, Yates
12. Otsego, Delaware, Greene

# Breakout Rooms (cont.)

**If your county does not have a breakout room listed...**

Option 1: Join a room with county(s) who you neighbor with, work closely with, or share a similar makeup with

Option 2: We can assign a room to you and your partners

Option 3: Join the facilitated group discussion room



# Instructions for Breakout Rooms

- Identify a recorder who will be responsible for completing the slide for your group and reporting out
- Within the Google Slide Deck, navigate to the slide designated for your breakout room
- Use the questions within the discussion guide to help guide your conversations
- Use the last 10-minutes of your breakout session to complete your group's report out slide

**If you need assistance at any point during the breakout session, click the “ASK FOR HELP” button in Zoom!**

---

---

# **Climate & Health Adaptation Workshop: Complete Streets, Climate Smart Communities, Environmental Improvements**

— Breakout Session Report Out —

---

---

# SARATOGA

## **What climate adaptation activity(s) did your group focus on?**

LEED certification for Saratoga County DOH

## **Who are your partners for this activity?**

DOT, LEED green council

## **What are your next steps?**

Improve walkability score at our office by constructing more sidewalks. Check the water usage of all wash rooms and ensure low-flow fixtures. Ensure that custodians have green cleaning products and materials. Convert a portion of the parking spaces to electric vehicle charging stations. Ensure that all lighting fixtures optimize energy performance.

## **What kind of assistance/support do you need?**

Financial, volunteers

# ST. LAWRENCE, JEFFERSON, LEWIS, FRANKLIN, ESSEX, CLINTON

## **What climate adaptation activity(s) did your group focus on?**

Cooling Centers in context of accessibility and transportation, heat pumps

Sustainability/Funding Sources...Age Friendly AARP

Snow removal - sidewalk access and water quality

Parking space needs add/remove, economic development

## **Who are your partners for this activity?**

Adult Centers, Fire/EMS, local college(s)

Potential partners: DPW

## **What are your next steps?**

Smart Growth Projects, Implementation funding DOT

## **What kind of assistance/support do you need?**

**Sharing best practices to strategize coordination, communication...Elected officials, community partners (pictures, maps)**

**Support for frustration overload...feedback to correct address**

**Share success stories**

**?CSC funding attainment**



# CHAUTAUQUA, ALLEGANY, CATTARAUGUS, YATES, STEUBEN, GENESEE

## What climate adaptation activity(s) did your group focus on?

- Chautauqua County: has complete street policy. This implementation required education to public and discussions with the DOT; if there are highway projects upcoming up, the projects are aligned with the complete streets policy
- The type of funding that is available within county ? That appears to be the biggest struggle
- Chautauqua County has cooling center education that is administered during hotter months
- Complete Streets and policy adaptation: Where to start? How do you start the discussion?
- Cattaraugus County: putting in more walk and bike paths, flowers and other visually appealing plants (grant funded)

## Who are your partners for this activity?

- Mayors, Legislature, municipalities, civil engineers, DOT, City Council
- Presentations to community at local centers (establish stakeholders)

## What are your next steps?

- Figure out where your county stands as far as CSC and Complete Streets
- Identify, who wears the “hat” of being the climate liaison within the county?
- Start talking about climate change within the community
- Think about budget/funding and what that would look like, but don't let it limit your goals/objectives
- Present alternative highway projects of what a complete street/climate change adaptation would look like in your community

## What kind of assistance/support do you need?

- Who would be the ideal climate liaison within a LHD to begin climate change talk?

# CORTLAND, ONEIDA, FULTON, SCHENECTADY

## **What climate adaptation activity(s) did your group focus on?**

Fostering partnerships with County Health/Planning and local officials, more creative at public education, funding

## **Who are your partners for this activity?**

County Planning/Health/Mobility Management, Local Boards/Councils/DPW/Zoning, HUD

## **What are your next steps?**

Reforge relationships, educate the public

## **What kind of assistance/support do you need?**

Funding and manpower

# OTSEGO, DELAWARE, GREENE

## **What climate adaptation activity(s) did your group focus on?**

Libraries used for cooling centers and other community locations-senior meal sites. County adoption of Age Friendly community.

## **Who are your partners for this activity?**

Office for the Aging, Libraries, Emergency Services, Planning, Board of Supervisors

## **What are your next steps?**

Surveying local libraries and senior meal sites

## **What kind of assistance/support do you need?**

The libraries, senior meal sites

# GROUP DISCUSSION

## **What climate adaptation activity(s) did your group focus on?**

- Becoming certified CSC
- Promoting CSC

## **Who are your partners for this activity?**

- Planning, CCE, agricultural board, highway department, parks department, local media (print and digital), local environmental groups/CBOs, other agencies (interagency communication)
- Specific partners may vary from county to county

## **What are your next steps?**

- Invite LHD to planning discussions for Putnam County CSC Task Force
- Consider reaching-out to CSC coordinators as source of technical assistance for CSC
- How can we get the word out?
- Discuss opportunities to consider VBD in flood response planning
- Identify local events and other strategies (e.g., roadway signs) to promote climate activities

## **What kind of assistance/support do you need?**

- Need a plan, someone to oversee, and funding (preferably paid, but if committed volunteer around that's great)
- More staff resources
- Awareness of funding opportunities
- Seek other counties who've done similar projects to learn best practices and leverage their experiences